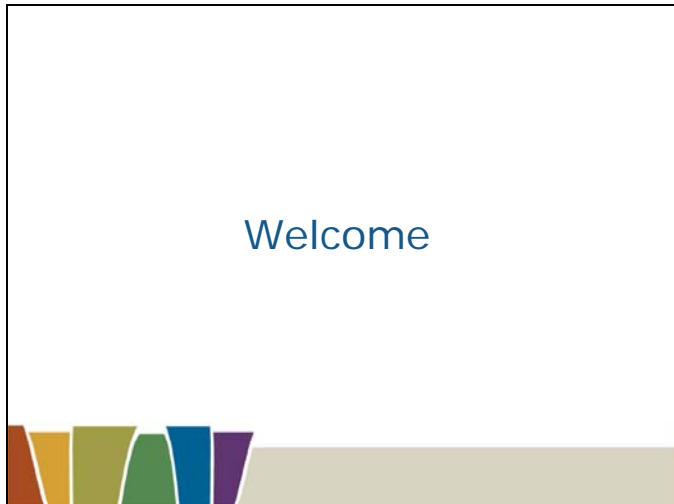


**Youth Attainment and Transitions
Provider Forums – June
Speaking Notes**





The provider forums were conducted in all states and territories with invited representatives of all youth and transitions programs currently funded under Career Advice Australia (CAA) and the Office for Youth. In addition representatives from all education sectors in the respective states were invited to the forums.

The forums were chaired by Rebecca Cross, Group Manager, Lifting Educational Outcomes or Helen McLaren, Branch Manager, Youth and Transitions Taskforce. They were supported by members of the Youth Attainment and Transitions Taskforce:

ACT & NT:	Andrew Bishop and Michelle Loudon
WA:	Jen Tyrell and Triscia Hogan
SA:	Jen Tyrell and Emily Forrest
Qld:	Kay Millican and Andrew Ferguson
NSW:	Viv Johnson and Adrian Hain
Vic & Tas:	Rena Houston and Jennifer Leary

Purpose

- Broad context and overview
- The Youth and Transitions National Partnership
- School Business Community Partnership Brokers
 - Morning Tea
- Youth Connections
- Timeframes
- Existing Program Arrangements

The provider meeting has been convened for all of the providers of:

- Youthlinx, Regional Industry Career Advisers (RICAS), National Industry Career Specialists (NICS), Connections, Mentor Marketplace, Local Community Partnerships (LCPs) and Youth Pathways.
- DEEWR acknowledges that this is a time of uncertainty for all providers;
 - we are here today in good faith and we want to share as much information with you as we can;
 - we are negotiating the arrangements with States and Territories and the information we give here today may change as a result of these discussions; and
 - we will answer as many questions and share as much information as we can, however we are limited by probity restrictions, and may not be able to answer all of your questions.

The structure of the day was as follows:

- Broad overview and context setting
- The Youth and Transitions National Partnership, including the new arrangements
- School Business Community Partnership Brokers
- Youth Connections
- Timeframes
- Existing Program Arrangements

There will be plenty of opportunities to ask questions, and the questions and answers will be posted on our website.

Education Landscape

- Commonwealth – State cooperation
- Council of Australian Governments (COAG) agreed to reforms across education
- COAG has outlined key goals for reform, including:
 - Year 12 or equivalent – 90% by 2015
 - Halving the gap for Indigenous students
 - 50% of population (20-64) qualifications at the Certificate III level



- The Education sector has been undergoing reform over the last 18 months.
- The Government is committed to an education revolution.
- This represents a great opportunity to transform schooling, particularly for those who are most disadvantaged, and the Government is clearly focused on lifting the tail of disadvantage for young people.
- The education reform is being implemented in a new era of Commonwealth and State cooperation.
- Through COAG, the Prime Minister and State and Territory Premiers and Chief Ministers have agreed to significant long term and ongoing reforms across all aspects of education, including early childhood development, schooling and vocational education and training.
- Key goals that COAG has agreed that are particularly relevant to our sector include:
 - 90% of school students are obtaining a year 12 or equivalent qualification by 2015.
 - Halving the gap for Indigenous students.
 - 50% of the 20 to 64 year old population hold qualifications at Certificate Level III or higher.
- COAG has also agreed a common framework for the reform of education, and endorsed objectives, outcomes, progress measures and future policy directions.

Mechanisms to support Reform

- National Education Agreement: Agreed to by COAG in November 2008.
- National Partnerships (NPs):
 - Literacy and Numeracy NP - \$540 m
 - Low SES Communities NP - \$1.1 b
 - Quality Teaching NP - \$550 m



- In the schooling space, COAG has agreed on a set of mechanisms that will support these reforms and drive change in Australian schooling.
- These mechanisms include a \$46.5 billion National Education Agreement (NEA), which was agreed to by COAG in November 2008. The NEA sets out funding to be provided to State and Territories, who have agreed to work towards the objectives, and achieve the outcomes and outputs agreed to by COAG.
- COAG has also agreed to a set of National Partnerships. National Partnerships include additional funding and address areas of national significance. Current National Partnerships include:
- The three Smarter Schools National Partnerships: (NP)
 - The Literacy and Numeracy (or Smarter Schools) NP - \$540 million. This focuses on better ways of delivery of literacy and numeracy in schools.
 - The Low Socio Economic Status (SES) Communities NP - \$1.1 b. This aims to address educational disadvantage arising from low SES in approximately 1500 schools with concentrated disadvantage.
 - Quality Teaching NP - \$550 million. Recognises the link between student performance and the quality of teachers.
- The Government is also making significant investment in other schooling areas, including the Building the Education Revolution, Trade Training Centres in Schools Program and Digital Education Revolution,

The Youth and Transitions Challenge Reform Agenda

- Multiple learning pathways – Year 12 or equivalent
- Career Development
- Mentoring
- School, business and community partnerships
- Individualised, personalised support for young people at risk

- The Government recognises that there are still some challenges to address in the youth and transitions space notwithstanding the successes of existing programs, including:
 - Improving access to a broader range of more flexible, relevant and engaging learning options to ensure more young people complete year 12 or equivalent qualifications;
 - Career development that isn't just about subject choice, but empowering students to identify strengths, talents and interests and build resilience;
 - Increasing the provision of a variety of meaningful quality mentoring opportunities;
 - Engaging the wider community, business and families in schooling to make learning more relevant to young people and improve their educational outcomes.
 - Improving early identification and support for young people disengaged or at risk of disengaging from education including individualised, personalised assistance to build resilience and improve personal skills and wellbeing.
- The Commonwealth Government, including COAG and State and Territory education ministers, has been working on a strategy to address these issues. I'll outline these reforms over the next set of slides.

A Compact with Young People

- National Youth Participation Requirement
 - completion of Year 10
 - learn or earn to age 17
- Education and training entitlement
- Lifting qualifications
 - priority to attain a Year 12 or equivalent qualification
- Changes to Youth Allowance (Other) and Family Tax Benefit (Part A)

- We all know that early school leavers and young people without Year 12 qualifications are particularly vulnerable to the labour market effects of an economic downturn.
- At its 30 April meeting, COAG agreed to concerted action to increase young people's engagement in education and training through a Compact with Young people.
- Through the Compact with Young people the Government is giving young people a very clear message that education and training is the key to their future, and backing that message by:
 - introducing a National Youth Participation Requirement;
 - ensuring that young people have access to an education or training place;
 - bringing forward the Year 12 or equivalent attainment target from 2020 to 2015; and
 - supporting the National Youth Participation requirement by strengthening the participation requirements for Youth Allowance (Other) and Family Tax Benefit (Part A), making education and training a precondition for obtaining this income support.

For young people this means:

- If they haven't completed Year 10 they should be in school;
 - If they are under 17, they should be in full-time school, training, higher education or full time work – or a combination of these; and
 - If they don't have a Year 12 or equivalent qualification they should be in school or training to attain this qualification.
- This will mean that young people will be better placed when the economy recovers.
 - But we all know that many young people will need considerable support to meet these requirements.

National Partnership on Year 12 Youth Attainment and Transitions

- Agreement to immediate and longer term reforms
- \$100 million in reward funding for States and Territories
- Progressive shift of responsibility and funding for Commonwealth youth, career and transitions programs to the States and Territories
- Reform of existing programs - \$623 million over four years



- COAG also agreed to put the Youth Compact in place under a National Partnership on Youth Attainment and Transitions.
- The National Partnership will see the Government collaborating with the states and territories to put in place a range of immediate and longer term reforms to:
 - Provide access to multiple learning pathways and keep young people engaged in their learning; and
 - Improve young people's transitions from school to further education, training or employment and active participation in their communities.
- The National Partnership will also include \$100 million in funding to support the delivery of the Youth Compact and reward states and territories for:
 - Improving rates of participation in school and VET by 2010; and
 - Improving Year 12 and equivalent attainment by 2012.
- In addition, COAG agreed that under the National Partnership roles and responsibilities in the area of youth attainment and transitions would be clarified and that this would include:
 - The Commonwealth having primary responsibility for youth labour-market programs;
 - The States and Territories having primary responsibility for the delivery of education and training including Vocational Education in Schools work placements; and
 - The States and Territories progressively taking primary responsibility for all youth, careers and transitions programs.
- To support the achievement of this, from 1 January 2010, a range of the Commonwealth's current Youth Career and Transition programs are being consolidated and streamlined into four new elements to be put in place under the National Partnership:
 - Maximising Engagement, Attainment and Successful Transitions;
 - National Career Development;

- School Business Community Partnership Brokers; and
 - Youth Connections
- We will be talking through these elements in more detail later in the presentation.

Collaboration with States and Territories

- New elements will be put in place in collaboration with each State and Territory
 - Clarify roles and responsibilities
 - Reduce duplication and overlap
 - Align regional boundaries
 - Joint program development and provider selection
 - Possible joint program management
 - Determine outcomes required for progressive shift of responsibility to the states and territories
 - Different program arrangements in each State and Territory



- Consistent with the COAG decision, in developing and implementing the new elements of the programs under the National Partnership the Commonwealth will work closely with the States and Territories to:
 - clarify the respective roles and responsibilities of Commonwealth and State governments;
 - reduce duplication and overlap between Commonwealth and State programs and services , thereby making services easier to access for young people;
 - align Commonwealth program region boundaries with State government region boundaries to support a joined-up services approach;
 - explore options for joint program development, provider selection and program management; and
 - determine the outcomes to be demonstrated for a progressive shift of funding and responsibility for youth career and transition programs and services to the States and Territories.
- It is therefore highly likely that each of the new program elements will be implemented in different ways, in every State and Territory, resulting in different arrangements, selection processes and contract periods across the country.
- This may range from integration into an existing State and Territory program to a four year contract in another jurisdiction and every variation in between along the continuum.
- It is likely that most will fall somewhere in the middle but more on that later.

Maximising Engagement, Attainment and Successful Transitions

- Currently two streams of Commonwealth funding for workplace learning
- From 1 January 2010, responsibility to be transferred to States and Territories
- Future funding will be for maximising engagement, attainment and successful transitions under key reform areas including:
 - Multiple learning pathways;
 - Career development; and
 - Mentoring



- Now let's examine each of the four new elements to be put in place under the NP in more detail. The first is *Maximising Engagement, Attainment and Successful Transitions*
- Currently the Commonwealth provides funding for workplace learning in two ways:
 - Funding to Local Community Partnerships for the Structured Workplace Learning Program; and
 - Funding to States and Territories to implement the On-the-job Election Commitment.
- From 1 January 2010, responsibility for VET in Schools work placements will be fully transferred to the states and territories.
- Funding of \$107 million over four years will also be provided to the States and Territories. However, under the National Partnership, the States and Territories will have the flexibility to use this funding to support a menu of reform areas including:
 - **Multiple learning pathways** – for example improving access to a broader range of more flexible, relevant and engaging learning options for young people;
 - **Career development** – for example offering universal access to high quality individualised career development and pathways planning; and
 - **Mentoring** – for example increasing the provision of a variety of meaningful quality mentoring opportunities and improving mentor training programs and the numbers of trained mentors.

National Career Development

- Approximately \$47 m
- January 2010 to December 2013
- Commonwealth will continue to fund projects that require a national approach
- Commonwealth will retain responsibility



- The second element is National Career Development which consists of \$47 million dollars in funding over four years, from 1 January 2010 to 31 December 2013.
- Funding will be utilised by the Commonwealth to support a range of projects that require a national approach to implementation for example the Job Guide, the myfuture website and the Australian Youth Mentoring Network.
- Unlike other elements of the National Partnership that will be progressively transferred to the States and Territories, the Commonwealth Government will retain responsibility for this element.

Program Elements Current Arrangements

In Australia there are currently:

- 126 LCPs operating across 212 set regions
- 57 RICAs operating across 57 regions
- 63 Youth Pathways providers operating across 94 regions
- 50 Connections providers operating at 61 sites
- 98 YouthLinx providers operating at 99 sites
- 34 Mentor Marketplace providers operating 34 projects



- Now, before we move on to the two program elements: School Business Community Partnerships and Youth Connections, I just want to highlight the current situation in each state and what we will be working towards in the future.

Summary of Each State and Territory:

In the ACT there are currently:

- Local Community Partnerships – 5 regions, 1 provider
- Regional Industry Career Advisers – 1 region, 1 provider
- Youth Pathways – 2 regions, 1 provider
- Connections – 1 site, 1 provider
- YouthLinx – 5 sites, 5 providers

In the Northern Territory there are currently:

- Local Community Partnerships – 7 regions, 4 providers
- Regional Industry Career Advisers – 3 regions, 1 provider
- Youth Pathways – 3 regions, 3 providers
- Connections – 2 sites, 2 providers
- YouthLinx – 4 sites, 4 providers

In Western Australia there are currently:

- Local Community Partnerships – 29 regions, 17 providers
- Regional Industry Career Advisers – 10 regions, 5 providers
- Youth Pathways – 14 regions, 10 providers
- Connections – 8 sites, 7 providers
- YouthLinx – 13 sites, 13 providers
- Mentor Marketplace – 3 projects,

In South Australia there are currently:

- Local Community Partnerships – 21 regions, 14 providers
- Regional Industry Career Advisers – 5 regions, 3 providers
- Youth Pathways – 10 regions, 7 providers
- Connections – 6 sites, 4 providers

- YouthLinx – 6 sites, 6 providers
- Mentor Marketplace – 3 projects,

In Queensland there are currently:

- Local Community Partnerships – 36 regions, 27 providers
- Regional Industry Career Advisers – 9 regions, 2 providers
- Youth Pathways – 12 regions, 7 providers
- Connections – 12 sites, 12 providers
- YouthLinx – 12 sites, 12 providers
- Mentor Marketplace – 6 projects,

In New South Wales there are currently:

- Local Community Partnerships operating - 60 regions, 35 providers
- Regional Industry Career Advisers - 14 regions, 4 providers
- Youth Pathways providers operating- 29 regions, 18 providers
- Connections - 18 sites, 13 providers
- YouthLinx – 29 sites, 29 providers
- Mentor Marketplace 7 projects

In Victoria there are currently:

- Local Community Partnerships - 47 regions , 23 providers
- Regional Industry Career Advisers - 13 regions, 4 providers
- Youth Pathways - 23 regions, 14 providers
- Connections - 9 sites, 11 providers
- YouthLinx - 24 sites, 24 providers
- Mentor Marketplace 5 projects,

In Tasmania there are currently:

- Local Community Partnerships - 8 regions, 5 providers
- Regional Industry Career Advisers - 2 regions, 2 providers
- Youth Pathways providers - 3 regions, 2 providers
- Connections providers - 3 sites, 2 providers
- YouthLinx providers 5 sites, 5 providers
- Mentor Marketplace -1 project,

- The current suite of Commonwealth youth career and transitions programs involves a range of providers operating in a variety of different areas across the state. Some programs provide state wide coverage across a set of defined regions, while others operate out of specific site based locations.
- There is also a range of State and Territory Government youth career and transition support programs providing similar or complementary services in a variety of different regional structures and locations.
- Despite good intentions and good program outcomes, there is still duplication in some areas, as well as gaps in the suite of services provided in others.
- So part of our aim is to remove duplication and integrate the Commonwealth programs more effectively with the States and Territories.

Future Arrangements

In Australia we are working towards:

- State wide coverage
- Common regions for both School Business Community Partnerships Brokers and Youth Connections
- Collaborating on region boundaries
- Wholly within the State border
- Collaboration on program design, implementation and provider selection
- Possible joint contract management



- Following on from initial discussions with the State and Territory Governments about future arrangements, we will be working towards the following:
 - State wide coverage and common regions for both the School Business Community Partnerships Brokers and Youth Connections providers;
 - Regions to be aligned with State region boundaries to support a joined-up services approach;
 - Regions wholly within the State border;
 - Collaboration in the development, implementation and selection of providers for both programs to complement and add value to current State government policies and programs;
 - Possible joint contract management arrangements.
- All of this is likely to result in different program arrangements in each state and territory. These negotiations are continuing in each State and Territory.

School Business Community Partnership Brokers

Outcomes

- Education providers
- Business and Industry
- Parents and families
- Community groups



- So let's take a look at the generic elements of the School Business Community Partnership Brokers (referred to as Partnership Brokers).
- As we are currently collaborating with State and Territory governments on the National Partnership, this program may be tailored to fit with what is already happening in each State and may not necessarily look exactly the same in each State and Territory.
- The Partnership Brokers program is designed to foster a strategic, whole of community approach to improving education and transition outcomes for young people.
- Available evidence demonstrates the benefit that strong, sustainable, mutually beneficial partnerships between schools, business and community have on the education and transition outcomes for young people.
- Evidence from the Career Advice Australia evaluation clearly indicates a need for programs such as Local Community Partnerships and Regional Industry Career Advisers to move away from service delivery, which creates dependence, and to be more strategic in design and better integrated.
- Partnership Brokers will build on the strengths of the CAA initiative and incorporate the best aspects of a number of programs, including Local Community Partnerships, Regional Industry Career Advisers and National Industry Career Specialists.
- The Partnership Brokers will be strategic organisations, free from prescribed service delivery constraints, with the local knowledge and networks to drive change in their community.
- They will employ staff with the capacity to engage with, and influence, all key stakeholder groups.
- In the move away from mandating inputs, Partnership Brokers won't be funded for specific activities such as an Adopt a School Project.

- Rather, Partnership Brokers will be funded to facilitate the creation of strategic, sustainable partnerships between a range of stakeholders – schools, business and industry, parents and community groups.
- Partnership Brokers will be expected to help build the capacity of schools in particular, to generate and sustain partnerships which will result in a broader infrastructure in the region supporting learning and transition outcomes.
- Partnership Brokers' success will be judged on the effectiveness of the partnerships to improve educational outcomes for young people - and the stakeholders' capacity to sustain those partnerships.
- The Australian Government is committing \$182.88million for Partnership Brokers over four years.
- Just to reiterate, this is a generic overview of the Partnership Broker program, and it should be noted that the final model of the program is subject to negotiations with each State and Territory. Different States/Territories may have different models of the program in place come 1 January 2010.

School Business Community Partnership Brokers

Outcomes

- Education providers
- Business and Industry
- Parents and families
- Community groups

- Partnership Brokers will not be funded for service delivery but to achieve outcomes.
- You can read in more detail about these outcomes and the indicators of these outcomes on the School Business Community Partnership Brokers A3 sheet that has been handed out today, and which is available on the website.
<http://www.deewr.gov.au/Youth/YouthAttainmentandTransitions/Pages/Home.aspx>
- In summary, the key outcomes expected of Partnership Brokers are:
 - Education providers partnering with stakeholders in their community to ensure all young people participate in challenging, relevant and engaging learning that broadens personal aspirations and improves education and transition outcomes. This means that Partnership Brokers will be working with a range of education providers including secondary and primary schools, as well as other education providers.
 - Business and industry participating in sustainable partnerships that develop the skills and knowledge of the future workforce and improve young people's education and transition outcomes.
 - Parents and families participating in partnerships that provide an informed and supportive environment for all young people. These partnerships will enable lifelong learning and career and pathway planning, and improve young people's education and transition outcomes.
 - Community groups engaging with key stakeholders in partnerships that harness resources and build social capital to support young people to identify and achieve their goals and improve their education and transition outcomes.
- You can see from this overview, an emerging, dynamic picture of a region where high-quality partnerships are established that support and facilitate the education and transition outcomes of young people: making learning experiences more meaningful, growing young people's awareness of their options for the future, building their skills to succeed in the workforce of the future and enhancing their contribution to the productivity of the nation.

School Business Community Partnership Brokers

Role

- Proactive and responsive
- Influencing
- Facilitating stakeholder engagement
- Building capacity
- Work closely with Youth Connections and State/Territory/local government programs

- Partnership Brokers will need to be proactive – through their in-depth understanding of the environment in their region they should work with stakeholders to develop strategies that address current and future needs of a region.
- For instance, in a region with a declining industry, Partnership Brokers might work with key stakeholders to develop strategies for diversifying industry and training young people in the skills required for the future.
- Or in an area with an emerging industry, the Partnership Brokers might work with a cluster of schools to ensure that the students and teachers understand the opportunities presented by this new industry and the pathways that young people could follow to become involved.
- Partnership Brokers should also work responsively, responding to an identified need in the community. For instance, a community provider may identify the need for mentoring for a particular group of young people. A Partnership Broker may work with the community provider to identify key stakeholders in the area with capacity to provide mentoring and facilitate a partnership between these stakeholders and the community provider.
- Partnership Brokers will need to be effective influencers, working with high-level stakeholders within a region to influence strategic planning and ensure that the broker partnerships are sustainable and well placed to contribute to education and transition outcomes for young people.
- Partnership Brokers will facilitate stakeholder engagement through a range of mechanisms, including facilitating small meetings between key stakeholders or organising larger-scale forums for networking opportunities.
- Partnership Brokers will need to be able to build the capacity of stakeholders to create and maintain partnerships themselves, thereby growing the outcomes of the program and reducing dependence on the Broker role.

- As flagged earlier in this presentation, the National Partnership on Youth Attainment and Transitions is a collaborative effort between the Commonwealth and State/Territory governments.
- As such it is expected that Partnership Brokers will work closely with Youth Connections providers as well as providers of State/Territory and local government programs in a strategic way.
- It is for this reason, and to reduce duplication in effort, that the regions for both Partnership Brokers and Youth Connections will be matched and aligned with State/Territory regions where possible.
- In light of the crucial role that Partnership Brokers will play in bringing key people together in a region for strategic purposes, DEEWR will be encouraging a collaborative approach to applying for this business, rather than a competitive one.

Break for Questions



- The questions asked in these sessions have been posted on the Q & A section of the website.
- <http://www.deewr.gov.au/Youth/YouthAttainmentandTransitions/Pages/Home.aspx>

Youth Connections

Focusing on:

- Personal development
- Connection and progression
- Educational growth
- Relationships



- The Australian Government is committing \$286.6 million for Youth Connections over four years to specifically help at-risk young people achieve Yr 12 or equivalent qualifications and transition successfully through to further education, training or work.
- Youth Connections will provide a continuum of services to at-risk young people ensuring they get the help they need. Like the Partnership Brokers, the final model of the program will be agreed and settled through negotiations with each state and territory and there are likely to be different models of the program operating in each state and territory.
- So let's take a look at the generic elements of the Youth Connections program.
- We want to ensure that the program complements, and does not duplicate, programs and activities already being delivered, or planned to be delivered, by State and Territory governments.
- The current youth programs – Youthlinx, Mentor Marketplace, Youth Pathways and Connections have been successful in engaging and re-engaging young people in education pathways and in building relationships in the community. However, despite the success of these programs, available data and research suggests that student disengagement remains high.
- This data tells us that Indigenous and low SES students, young people with low literacy and numeracy and in general, boys, are the most at risk of disconnecting from education. We also know that young people in rural and remote areas face more significant disadvantage.
- To address this, Youth Connections will complement the reform in the low SES and literacy and numeracy national partnerships.
- Youth Connections will consolidate the current youth programs for youth at risk and build on the best elements of these programs. It will provide a safety net for early

school leavers, supporting them to re-engage with education and training, and give young people greater flexibility to receive the right service for them.

- Evaluations of current programs also show that providers need to have strong relationships and work closely with key stakeholders in the community to deliver successful outcomes to young people. Effective partnerships between a range of providers and with state and territory services will be a key characteristic of the program.
- Through these partnerships, young people will be able to receive appropriate early intervention activity or tailored, individual case management to assist them to re-engage with education, training and/or the community.

Youth Connections

Focusing on:

- Personal development
- Connection and progression
- Educational growth
- Relationships

- Youth Connections will be a service delivery program providing support for young people at risk of leaving school early or who have already disengaged from school.
- Youth Connections will improve education and life skills outcomes for all people at risk of not attaining Year 12 or equivalent and not making a successful transition to further education, training or work. Youth Connections will support personal development and facilitate connection with and progression through education.
- The A3 Youth Connections sheet that has been handed out today includes detail on the outcomes to which Youth Connections providers will be expected to contribute, and which is available on the website.
<http://www.deewr.gov.au/Youth/YouthAttainmentandTransitions/Pages/Home.aspx>
- In summary, the key outcomes for Youth Connections are:
 - Firstly, that young people at risk develop personal skills and attributes that promote well-being and support positive life choices. This means that providers will develop strategies to help young people overcome personal barriers to participation in education, build social skills and develop resilience to engage or re-engage with education, work, family and/or the community.
 - Secondly, that young people at risk are provided with pathways and options to reconnect and progress their education and make a successful transition to further education, training or work and engage with the wider community. This may mean reconnecting a young person with mainstream education, engaging a young person with TAFE or other suitable training course, or providing an alternative and flexible learning facility.
 - Thirdly, that young people at risk are supported by providers who have strong and collaborative relationships with other key organisations and service providers. These relationships will strengthen and improve the Youth Connections providers' ability to provide an appropriate range of services to at-risk young people. This means that providers will build strong relationships with schools and specialist service providers making the best use of available community resources enabling young people to access and benefit from all services within the community.

Youth Connections

- Service Delivery
- A wide spectrum of service
- Proactive
- Personalised
- Flexible
- Community Centred
- Collaborative

- Unlike the Partnership Brokers, Youth Connections will be funded for a service delivery role.
- As mentioned previously, we will be working closely with State and Territory governments to develop the program in a strategic way that both maximizes the services available to young people and reduces duplication. The final make-up of the program may vary from State to State as a result of these consultations. However, it is anticipated that the Youth Connections providers will offer a continuum of service to at risk and disengaged youth. Some of the services provided by Youth Connections will include:
 - Activities that proactively engage young people and promote early identification and intervention of young people at-risk of leaving school early and/or disengaging with the community. For example, Youth Connections providers may work with a school to build programs into their curriculum that help young people develop resilience skills.
 - Personalised case management and support for young people to help them overcome personal barriers. This may mean referring a young person with substance abuse issues to an appropriate service. It could mean working with a young person to find an alternative education pathway. A Youth Connections provider may engage a severely disconnected young person by giving them a place to go, or an opportunity to undertake an activity that interests them.
 - Providing a flexible, alternative education environment to young people who have disengaged from mainstream education facilities.
 - Working in a community to ensure infrastructure is in place to support young people and being aware of all of the available services in a particular region.
- Youth Connections providers will be collaborative and will work with both government and non-government schools, parents and the community. They will make assessments to determine the appropriate service or support for a young person. Youth Connections will offer personalised service to young people through both one-on-one assistance and group activities.

- Youth Connections providers will be expected to work with the Partnership Brokers in their region. This could include working with Partnership Brokers to initiate mentoring opportunities for at-risk young people with local businesses, identities or sportsmen or women.
- Given the range of services that Youth Connections providers will be asked to undertake, we expect there will be significant collaboration between organisations within a region to form a group that can offer these services.

Process and Anticipated Future Timeframes

Initial Consultation with State and Territory Governments	📌 Done
Provider Forums	📌 Today
Second Consultation with State and Territory Governments	📌 Today
Approach to Market	August
Public Information Sessions	August
Applications Close	September
Contract Negotiations and Finalisation	Oct/Nov
New Arrangements	1 January 2010

At the time of these provider forums, DEEWR had completed the initial consultations with States and Territories and undertaken a second consultation with State and Territory governments to progress agreement on the shape of the new programs.

It is anticipated that the procurement process will be announced in August with public information sessions in metropolitan and major regional centres in each State and Territory. This will enable the process of closing applications, contract negotiations and finalisation to be complete in time for the new arrangements to commence on the 1st of January 2010 in each state.

Currently it is worth noting that:

- Timelines for each procurement process may potentially align and this will be clearer after negotiations with States and Territories.
- There will be a separate procurement process for each State and Territory and programs will potentially look different in every State and Territory
- The Regions in each state will be aligned for both programs. Discussion is underway with States and Territories about regions for each State or Territory to maximise collaboration with existing youth and transition programs.
- Contract periods will be negotiated with each State and Territory. These periods may be between 1 and 4 years – more likely to be in the middle range.
- An IT system is being developed to support new programs
- Organisations will be given a minimum of six weeks to complete applications.

Existing programs

Provider Obligations

- Providers are required to meet all existing obligations, including:
 - o contracted milestones and program guideline requirements
 - o service/business levels/planned activities
 - o end of year/program reporting
 - o maintaining stakeholder relationships

In the final year of current CAA and youth programs, DEEWR expects that providers will continue to deliver the services you have been engaged to provide and to comply with all obligations under your contractual agreements.

Having said this, we also recognise the many challenges providers will face in maintaining services and relationships in the final months of these programs. We are keen to work with all providers to ensure that the winding up of current contracts and the transition to new program arrangements is as smooth as possible.

Providers should revisit their contractual obligations and ensure they are being proactive and have a plan in place to meet these requirements.

- For some providers, this will mean beginning to record your progress against business plans in preparation for end of year reporting,
- For others, it will mean ensuring business levels are achieved and participant records are complete and ready for archiving, or it may mean ensuring you have financial management plans in place to deliver services until the end of the agreement.

The Department will ensure that providers have timely access to end of program advice and tools such as reporting templates to help you meet your obligations.

If for what ever reason, providers are unable to deliver the required services or meet the required obligations, it is important that you contact your Contract Manager in the State Office as soon as possible. We will work with you to assist you to meet your requirements, to ensure the least disruption to services and the best outcomes for young people and projects in 2009.

We acknowledge providers have established partnerships and built relationships with stakeholders over many years and we are keen to work with you to ensure your stakeholders understand the nature of the new programs, what this will mean for them, and ensure they are able to effectively engage in the new arrangements from January 2010.

Existing programs (cont.)

Advice about discontinuing contracts

- The Department will work with you to provide advice on:
 - o staffing
 - o participant information/files
 - o how to support young people engaged in existing programs
 - o what to do with program resources/assets and leasing
 - o financial obligations and final payments

We have already fielded a number of questions from providers on the wind-up of contracts and we understand that you will have further questions and issues as the current programs draw to a close.

We are developing information that will identify what to do with the more practical aspects of finalising programs such as the distribution of assets, copyright and use of program materials and archiving participant records. We will also be providing advice on some of the non-routine issues you might face, such as staff turnover that affects your capacity to carry out your obligations.

We plan to progressively roll out information from July and use existing forums and newsletters to ensure all providers are aware of the Department's expectations.

In the meantime, if you are unsure about your obligations or have a question about winding up programs contact your Contract Manager in the first instance.

Further Information

- Website: www.deewr.gov.au/Youth/YouthAttainmentandTransitions
- Email: transitions@deewr.gov.au

Information will be progressively posted on our website, including this PowerPoint presentation, and the questions that were answered today. These will be posted after the conclusion of all of the provider forums across Australia.

www.deewr.gov.au/Youth/YouthAttainmentandTransitions

You should check this website regularly for new information.

We have also set up an email address so that you can send us your feedback and/or questions.

transitions@deewr.gov.au

Please direct all questions or feedback related to the new programs to this email address. It should be noted that emails will not be answered individually. Rather, the questions asked will form the basis of Q & As which will be posted on our website.

Closing Remarks

Provider Forums

Closing Comments were delivered by DEEWR State Managers or Deputy State Transition

In closing today, I would like to take this opportunity to thank all of you, as program Providers, for the professional and dedicated work that you have carried out over the past years.

Each program has made a valuable contribution to the youth transitions landscape in each State and Territory. For example, Our Mentor Marketplace Providers have been providing mentoring support for young people now for seven (7) years in all states and territories except the NT and ACT. In 2008/09, over 2,500 young people will have been supported via mentoring through Mentor Marketplace.

Below is a summary of the achievements of the CAA and youth programs across each State and Territory.

In 2008:

Australian Capital Territory:

LCPs provided 959 students and 1430 employers with pre SWL placement support, it assisted 15 schools to participate in Career and Transition Support initiatives and facilitated 39 Adopt a School projects with 106 employers participating in these projects.

Our Youth Pathways and Connections Providers also provided policy input via their National and State Provider Networks. They have of course, supported many of the most at risk young people to remain engaged or to re-engage in education. Last year YP Providers supported 304 young people and Connections assisted 62 young disengaged people in the ACT.

Youth Linx has provided assistance to many young people and their families. Youth Linx providers in the ACT had 22,142 numbers of contacts with young people and 318 numbers of contacts with families during 2007/2008.

In Northern Territory:

Our LCPs over the past three and a half years have made a significant contribution to youth transition policy via national and state networks. They have supported Structured Workplace Learning, Career and Transition Services and Adopt a School.

Our Youth Pathways and Connections providers have also provided policy input via National and State Provider Networks. However, in the NT we appreciate that Youth Pathways and Connections have only recently come onboard. All the same, we know that you will be supporting at risk young people to remain engaged or to re-engage in education this year.

Youthlinx has provided assistance to many young people and their families.

In Western Australia:

LCPs have supported schools and identified emerging industries for students undertaking SWL placement support and they assisted numerous schools in Career and Transition Support initiatives.

Our Youth Pathways and Connections Providers also provided policy input via their National and State Provider Networks. They have of course, supported many of the most at risk young people to remain engaged or to re-engage in education. Last year YP Providers supported 277 young people and Connections assisted 349 young disengaged people in Western Australia.

YouthLinx has provided assistance to many young people and their families. During 2007/2008, YouthLinx Providers in Western Australia had over 6500 contacts with young people and families.

In South Australia

LCPs provided a large number of students with pre-SWL placement support and they assisted numerous schools in Career and Transition Support initiatives. They facilitated successful Adopt a School projects with many small, medium and large employers participating in these projects.

Our Youth Pathways and Connections Providers also provided policy input via their National and State Provider Networks. They have of course, supported many of the most at risk young people to remain engaged or to re-engage in education. Last year YP Providers supported 277 young people and Connections assisted 349 young disengaged people in South Australia.

YouthLinx has provided assistance to many young people and their families. During 2007/2008, YouthLinx Providers in South Australia had over 6500 contacts with young people and families

In Queensland:

LCPs provided over 22,108 students with pre-SWL placement support and they assisted numerous schools in Career and Transition Support initiatives. They facilitated 161 Adopt a School projects with 840 employers participating in these projects.

Our Youth Pathways Providers also provided policy input via their National and State Provider Networks. They have of course, supported many of the most at risk young people to remain engaged or to re-engage in education. Last year YP Providers supported 6,418 young people in Queensland.

YouthLinx has provided assistance to many young people and their families. During 2007/2008, YouthLinx Providers in Queensland had over 29,400 contacts with young people and 1,500 contacts with families

In New South Wales:

LCPs provided 42 370 students and 19 350 employers with pre SWL placement support, they assisted 153 schools to participate in Career and Transition Support initiatives and they facilitated 419 Adopt a School projects with 907 employers participating in these projects.

Our Youth Pathways and Connections Providers also provided policy input via their National and State Provider Networks. They have of course, supported many of the most at risk young people to remain engaged or to re-engage in education. Last year YP Providers supported 10,174 young people and Connections assisted 1,053 young disengaged people in NSW.

Youth Linx has provided assistance to many young people and their families. Youth Linx providers in NSW had 77,667 numbers of contacts with young people and 2,285 numbers of contacts with families during 2007/2008.

In Victoria

LCPs provided over 15,053 students and 3,257 employers with pre-SWL placement support and they assisted 595 schools and their students and 1,481 young people not in a school environment to participate in Career and Transition Support initiatives. They facilitated 219 Adopt a School projects with 3218 students and 629 employers participating in these projects.

Our Youth Pathways and Connections Providers also provided policy input via their National and State Provider Networks. They have of course, supported many of the most at risk young people to remain engaged or to re-engage in education. Last year YP Providers supported 5,957 young people and Connections assisted 742 young disengaged people in Victoria.

YouthLinx has provided assistance to many young people and their families. During 2007/2008, YouthLinx Providers in Victoria had over 83,400 contacts with young people and 7,836 contacts with families.

In Tasmania

LCPs assisted thousands of young people from many schools right across the State to participate in Career and Transition initiatives facilitated by the LCP with other stakeholders. 37 Adopt a School Projects were organised, and these projects involved the participation of nearly 100 employers.

Our Youth Pathways and Connections Providers also provided policy input via their National and State Provider Networks. They have of course, supported many of the most at risk young people to remain engaged or to re-engage in education. Last year YP Providers supported 1100 young people and Connections assisted 45 young disengaged people in 2008 and are planning to assist 100 young people this year.

YouthLinx has provided assistance to many young people and their families. During 2007/2008, YouthLinx Providers in Tasmania had over 15,000 contacts with young people and 700 contacts with their families.

The Industry leadership and representation provided by the RICAs and NICS has been a significant element of the CAA initiative and its achievements over the last three and a half years. The RICAs and NICS have played an important part in changing the way business and industry see their role in the youth career agenda by making the business case and moving business and industry from a short term recruitment focus to a longer term career development approach.

A real feature of the current networks is that RICAs and NICS have worked in partnership with LCPs to pilot, scope and propagate successful models for industry engagement throughout Australia. This collaboration across the networks has benefited employers and young people. It has assisted to establish a strong foundation for continuing industry engagement in support of improved education and transition outcomes. Industry engagement will be an important component of future program arrangements.

The teams in DEEWR State Offices have worked with many of you over a significant period of time. I would like to acknowledge publicly providers' contribution and hard work and to thank you for willingness to work with us during this time. I would be remiss of me, too, not to acknowledge State office staff here today who have all worked with providers over the years in developing your capacity to deliver youth and transition programs on behalf of the Australian Government.

We are entering a period of significant change in how transitions support to young people will be delivered and I look forward to working closely with the State and Territory Governments as we roll out these new arrangements. I sincerely hope that many of you will continue to play a roll in this new landscape, supporting young people to make a successful transition to a fulfilling life.

On behalf of DEEWR nation wide I thank you again for your contribution.